

Share of medium- and high-skill and technology-intensive manufactures in countries

Source: UNCTAD secretariat calculations, based on the UNCTADStat database.

Chad	0.8
Mongolia	0.8
Azerbaijan	1.2
Lesotho	2.9
Ethiopia	3.1
Bolivia (Plurinational State of)	3.1
Burkina Faso	3.3
Paraguay	4.2
Tajikistan	4.2
Lao People's Democratic Republic	4.6
Botswana	4.6
Kazakhstan	5.0
Rwanda	5.5
Zimbabwe	6.3
Central African Republic	6.6
Afghanistan	6.8
Zambia	6.8
Turkmenistan	7.3
Mali	7.8
Armenia	8.7
Nepal	9.8
Malawi	10.4
Burundi	11.0
Bhutan	15.0
Uganda	15.6
Republic of Moldova	20.2
Kyrgyzstan	21.8
Niger	24.6
The former Yugoslav Republic of Macedonia	26.4
Uzbekistan	28.7
Swaziland	30.4
Landlocked developing countries	7.1

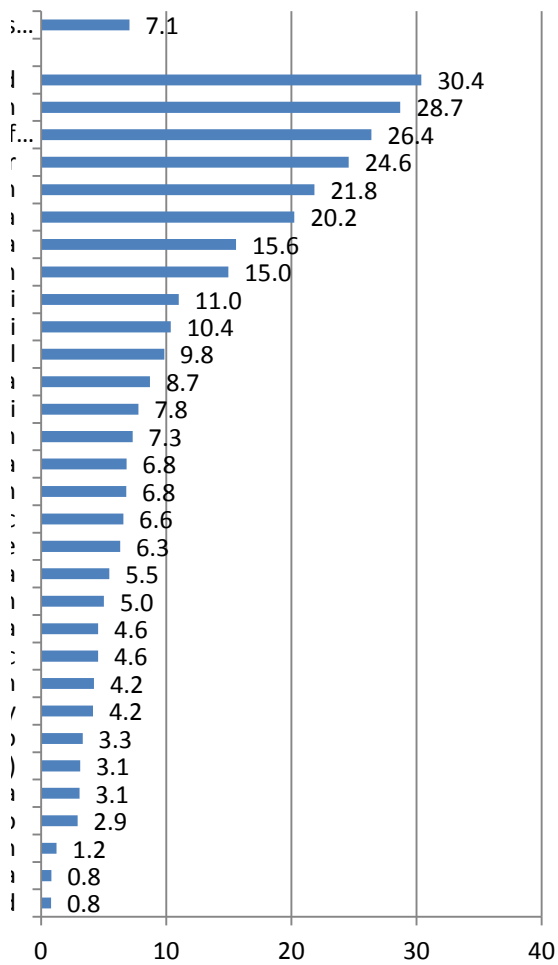
Share of medium- and high-skill and technology-intensive manufactures in landlocked developing countries

Swaziland	30.4
Uzbekistan	28.7
The former Yugoslav Republic of Macedonia	26.4
Niger	24.6
Kyrgyzstan	21.8
Republic of Moldova	20.2
Uganda	15.6
Bhutan	15.0
Burundi	11.0
Malawi	10.4
Nepal	9.8
Armenia	8.7
Mali	7.8
Turkmenistan	7.3
Zambia	6.8
Afghanistan	6.8
Central African Republic	6.6
Zimbabwe	6.3
Rwanda	5.5
Kazakhstan	5.0
Botswana	4.6
Lao People's Democratic Republic	4.6
Tajikistan	4.2
Paraguay	4.2
Burkina Faso	3.3
Bolivia (Plurinational State of)	3.1
Ethiopia	3.1
Lesotho	2.9
Azerbaijan	1.2
Mongolia	0.8
Chad	0.8

Source: UNCTAD secretariat calculations

Country's total merchandise exports (2010-2013)

Low- and high-skill and intensive manufactures in total merchandise exports (2010-2013)



Source: UNCTADStat database.